

For Use With Models:

13500, 13502, 13503, 13504, 13505, 13506, 13507,
 13508, 13512, 13515, 13516, 13517, 13518, 52378,
 52574, 52575, 52577, 52578, 52580, 52581, 52660,
 52662, 52663, 52668, 52669, 52672, 52673, 52678,
 52679, 52680, 52682, 52683, 52688, 52689, 52692,
 52693, 52698, 52699, 52717, 52718, 52721, 52722,
 52725 (**May be used on all 1 Hp Tools**)

Parts Page Reorder No. PD02•22

Effective April, 2002

53655 Muffler Assembly

Machine Parts

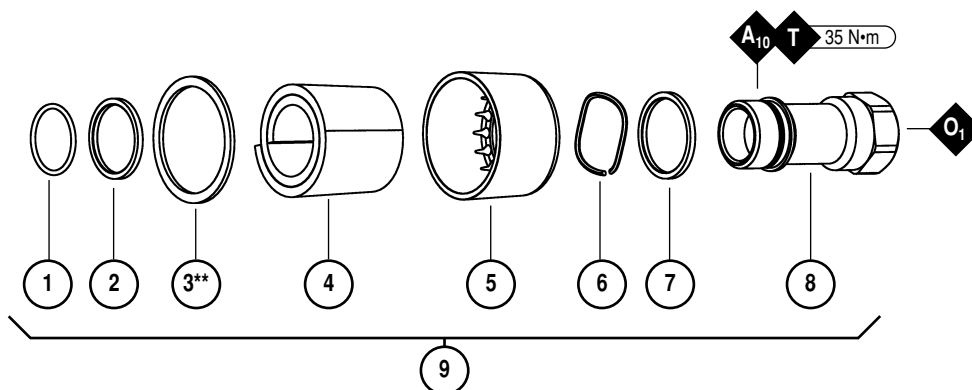
Parts included in muffler assembly are identified by part number.

Please refer to appropriate parts page for complete identification and disassembly/assembly instructions.

Index Key

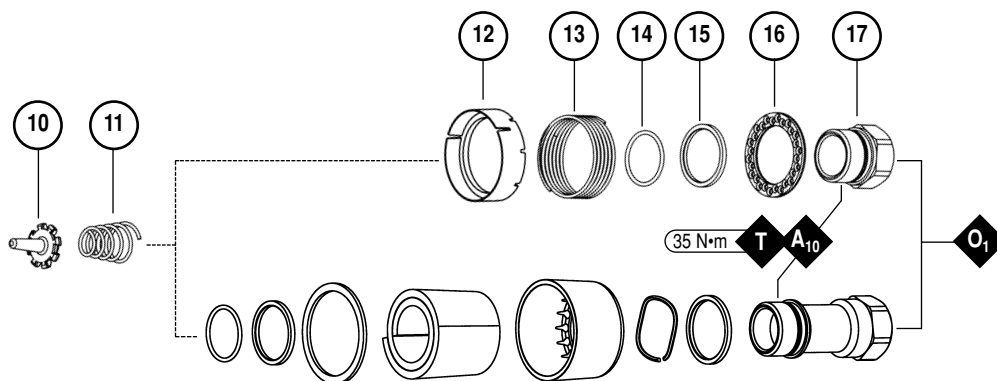
No.	Part #	Description
1	96442	O-Ring
2	51940	Spacer
3	53682	Gasket**
4	94528	Felt Silencer
5	53686	Muffler Cap
6	94924	Wave Spring
7	53683	Spacer
8	53681	Inlet Bushing (Includes (2) 51938 Screens)
9	53655	Muffler Assembly
10	51944	Tip Valve
11	51943	Spring
12	51942	Baffle
13	51941	Spring
14	96442	O-Ring
15	51940	Spacer
16	51939	Silencer Plate
17	51937	Inlet Bushing (Includes (2) 51938 Screens)

KEY	
	Oil: O ₁ = Air Lube
	Adhesive: A ₁₀ = Loctite #243
	Torque: N•m x 8.85 = In. - lbs.



Converting To A 53655 Muffler Assembly

For Use With All 1HP Tools



Muffler Conversion Instructions

Assembly/Disassembly:

- Secure housing using 51989 Repair Collar (*ordered separately*).
- Remove 51937 Inlet Bushing (twist counterclockwise).
- Remove 51941 Spring and 51942 Baffle from housing.
- * Preassemble muffler, slide 53683 Spacer over 53681 Inlet Bushing and up against hex head base. Slide 94924 Wave Spring over 53681 Inlet Bushing and up against 53683 spacer. Pre-roll 94528 Felt and install in 53686 Muffler Cap, support felt/muffler cap assembly and slide 53681 Inlet Bushing thru the inside until the muffler cap assembly seats against 94924 Wave Spring. Flare the felt and place 51940 Spacer over male thread, and set 96442 O-Ring into groove at the base of thread, return felt to unflared form. Slide 51943 Spring into bushing and up to two 51938 Screens.
- * Place 53682 Gasket over felt silencer and against 53686 Muffler Cap.
- Apply a drop of Loctite® #243 (or equiv.) to 53681 Inlet Bushing thread.
- Align small inside diameter of 51943 Spring to cone point on 51944 Tip Valve and thread 53681 Inlet Bushing and sub assembly into place. Torque bushing to 35 N•m (310 lb.-in.).

Conversion Complete. Please allow 30 minutes for adhesives to cure before operating tool.

*When purchasing muffler assembly P/N 53655, muffler should be assembled so these steps can be skipped.

**When 53655 Muffler Assembly is used with an 53621 Over Hose Assembly (*sold separately*) replace 53682 Gasket with 53687 Gasket.

Visit Our Web Site: www.dynabrade.com

Email: Customer.Service@Dynabrade.com



DYNABRADE, INC., 8989 Sheridan Drive • Clarence, New York 14031-1490 • Phone: (716) 631-0100 • Fax: 716-631-2073 • International Fax: 716-631-2524
DYNABRADE EUROPE S.à.r.l., Zone Artisanale • L-5485 Wormeldange—Haut, Luxembourg • Telephone: 352 76 84 94 1 • Fax: 352 76 84 95 1

©DYNABRADE, INC., 2002

PRINTED IN USA